

Trust, Professionalism and Regulation:

A critical exploration of Law and Medicine

Dr Laura Knight

Dr Kirsty Alexander – k.alexander@ucl.ac.uk

Prof Ann Griffin

Dr Catherine O’Keeffe

Dr Judith Tweedie

Dr Milou Silkens

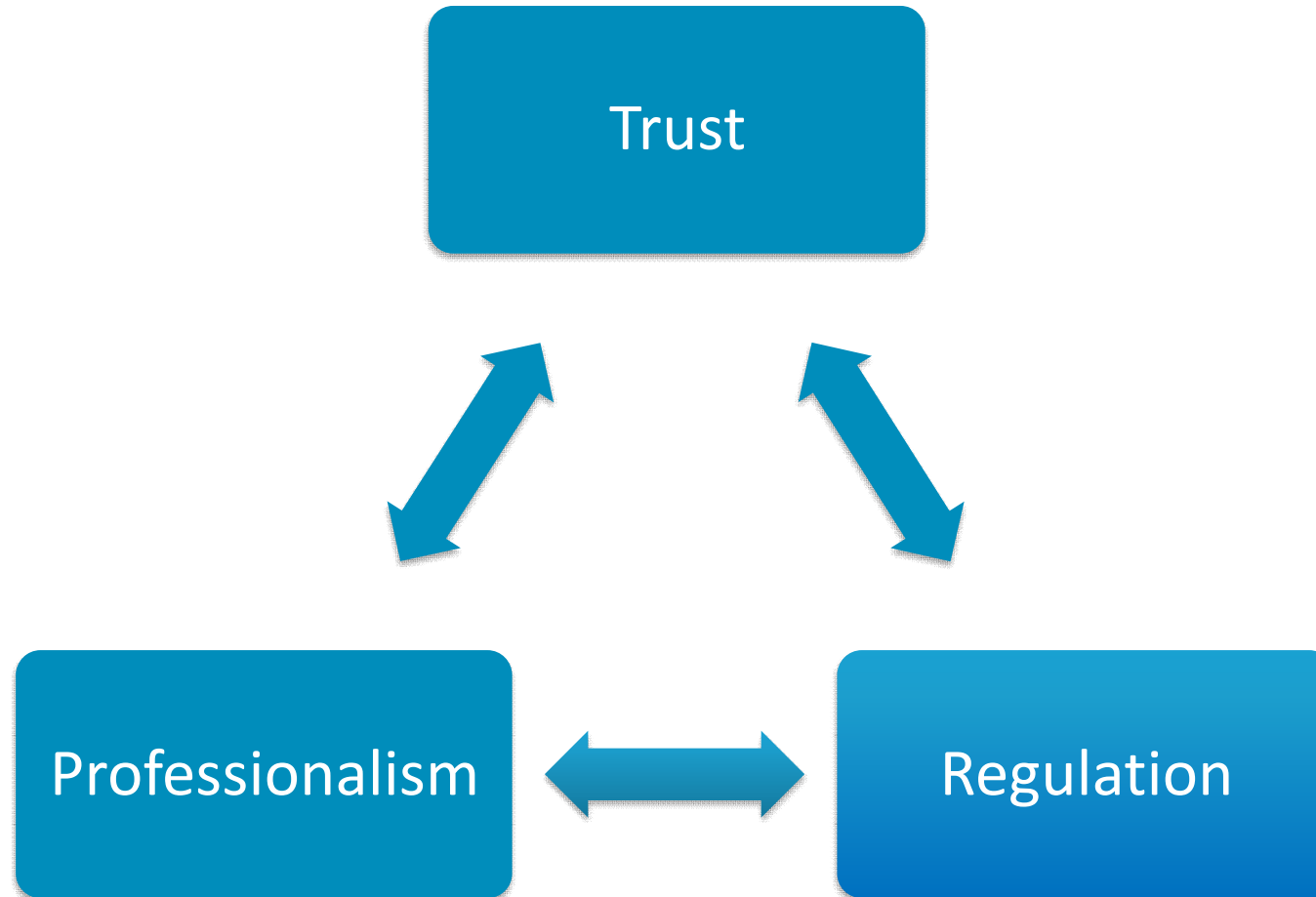
UCL Medical School
RDME
Research Department
of Medical Education



Read the Executive Summary & Full Report:

<https://www.ucl.ac.uk/medical-school/research/our-research/public-trust-medicine-and-law>

Background



Aims & Purpose

- 80% trust doctors to tell the truth; 42% trust lawyers (YouGov, 2016)
- How do UK medical and legal professionals understand professionalism and regulation to impact trust in their profession?
- ‘Snapshot’ of current attitudes; critical & evaluative space



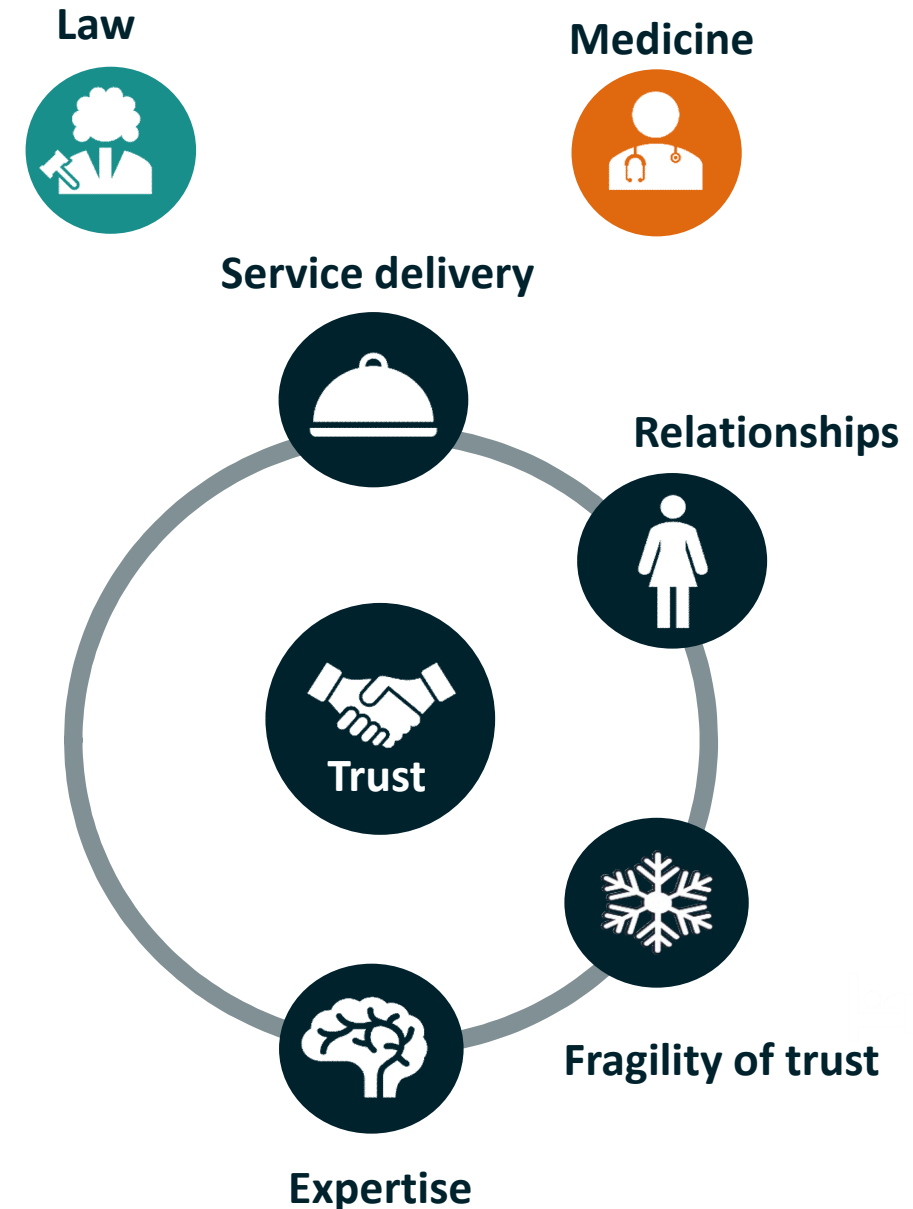
Methods

- Diverse participant group
 - Recruitment strategies
 - 15 in legal profession; 15 in medical profession
 - Stratified: those making & influencing policy; those enacting policy; practitioners; lay advisers to the profession
- Semi-structured interviews
- Political discourse theory (PDT)
 - Descriptions, justifications, attitudes and beliefs



Key Findings – Similarities

- Professions as service provision
 - Consistent, effective & following principles of professionalism
 - Importance of trust relationships between individuals
 - Threat of untrustworthiness
 - for individuals
 - for the group



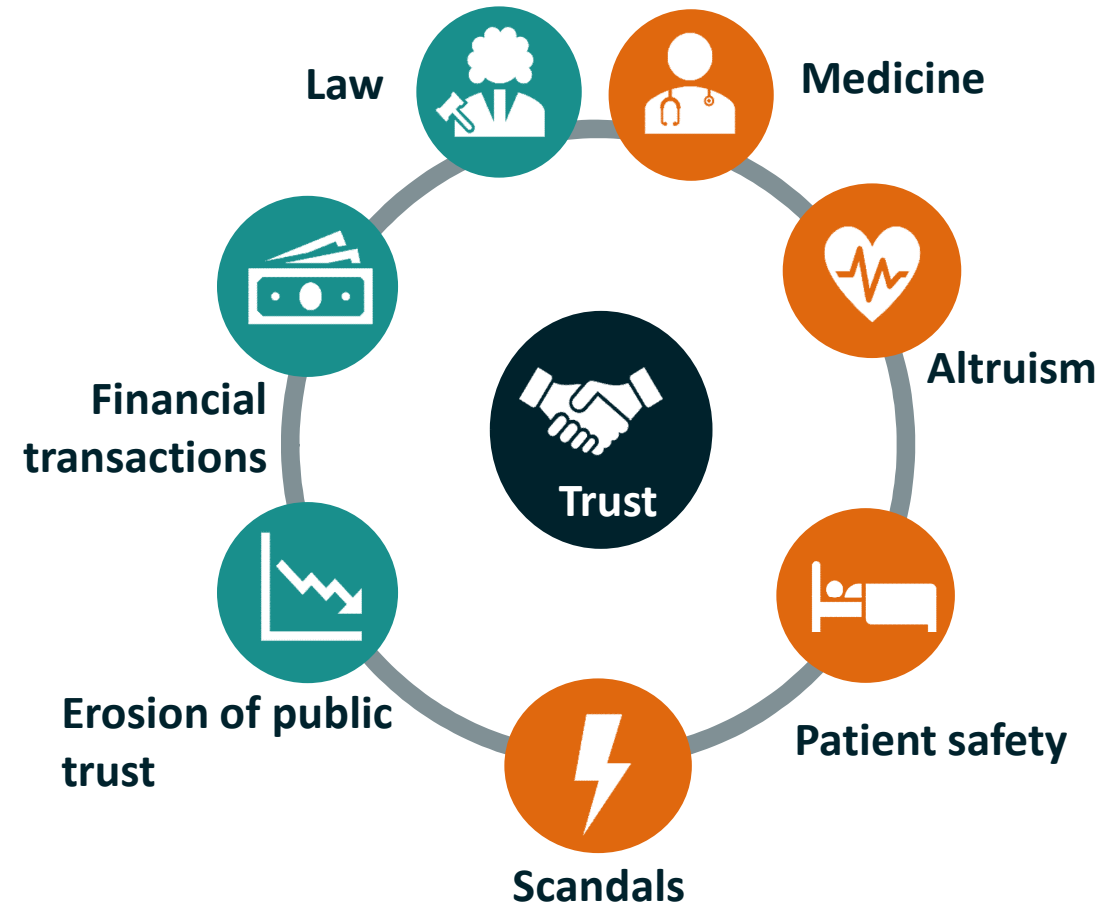
Key Findings – Similarities

- Relationships regulated by professional accountability
 - Measurable nature of professionalism & trust
 - Challenges to regulation
 - Promises/threats of regulation



Key Findings – differences

- Service provision for profit or altruism
 - The erosion of trust in wider prof
- Greater risk in medicine
 - Financial vs health
- Greater reaction to scandals
- Higher perceived threat, justified higher regulation & associated values



The future...?

As society has become more challenging and more aware of error and less tolerant of it, less tolerant of variants of practice, it's become - first of all doctors are being challenged more frequently and it's become harder for them to keep up to date as knowledge expands exponentially on a continual basis. And those grey lines of are you doing enough to keep up to date and are you doing your work as diligently as possible, those grey lines are becoming ever more blurred and more difficult.

(P28, Medicine, policy maker)

k.alexander@ucl.ac.uk

Trust, Professionalism and Regulation: A critical exploration of Law and Medicine

Read the Executive Summary & Full Report:

<https://www.ucl.ac.uk/medical-school/research/our-research/public-trust-medicine-and-law>

Contact email: k.alexander@ucl.ac.uk

UCL Medical School
R D M E
Research Department
of Medical Education

